



**Pressure Relief Valve
Model: SRV390**



Set Pressure Range: 25-300 psig

Set Pressure Tolerance: ± 2 psig up to and including 70 psig, $\pm 3\%$ of set pressure greater than 70 psig. As required in Table 3.6.3.1-2 of the ASME Boiler & Pressure Vessel Code Sec. XIII.

**Seat Leakage: Bubble Tight within 5 psig for set pressure 50 psig or less
Bubble Tight within 10% for set pressure greater than 50 psig
As required in paragraph 2.2.3 of API 527.**

Flow Factor (Slope Method): 1.55

Operating Temperature Range: -65°F to 400°F

Materials of Construction:

Seat, Cap, Piston: ASTM B16 Brass or ASTM A582 Stainless

Spring: 17-7 Stainless Steel

Seal: Silicone or Viton

Valve Weight: 0.28 lbm

Valve Options:

Valve Material: ASTM B16 Brass or ASTM A582 Stainless

Compliance with European PED 2014/68/EU, "CE" Stamp

Seal: Silicone (-65°F to 400°F) or Viton (-15°F to 400°F)

Plating: Nickel Plating

Inlet NPT Sizes: 3/8 NPT or BSPT

1/2 NPT, BSPT, or BSPP

Certifications:

ASME Boiler & Pressure Vessel Code Section XIII

CSA B51-03 Boiler, Pressure, Vessel, and Pressure Piping Code



CONRADER

Ordering Information

SRV390		-	1/2		-	BSPT		-	SS		-	V		-	CE		-	SC		-	SST		-	150	
Connection Size		Connection Type		Construction Material		Seal Material		Optional Code		Serialized		Thread Sealant		Pressure Setting											
Option	Code	Option	Code	Option	Code	Option	Code	Option	Code	Option	Code	Option	Code	Option	Code										
3/8"	3/8	NPT	(Blank)	Brass	(Blank)	Silicone	(Blank)	None	(Blank)	None	(Blank)	None	(Blank)	None	(Blank)										
1/2"	1/2	BSPT	BSPT	Nickel Plated	NP	Viton®	V	CE Mark	CE	Serialized	SC	White	SST												
				Stainless Steel	SS			Non-Code	NC																

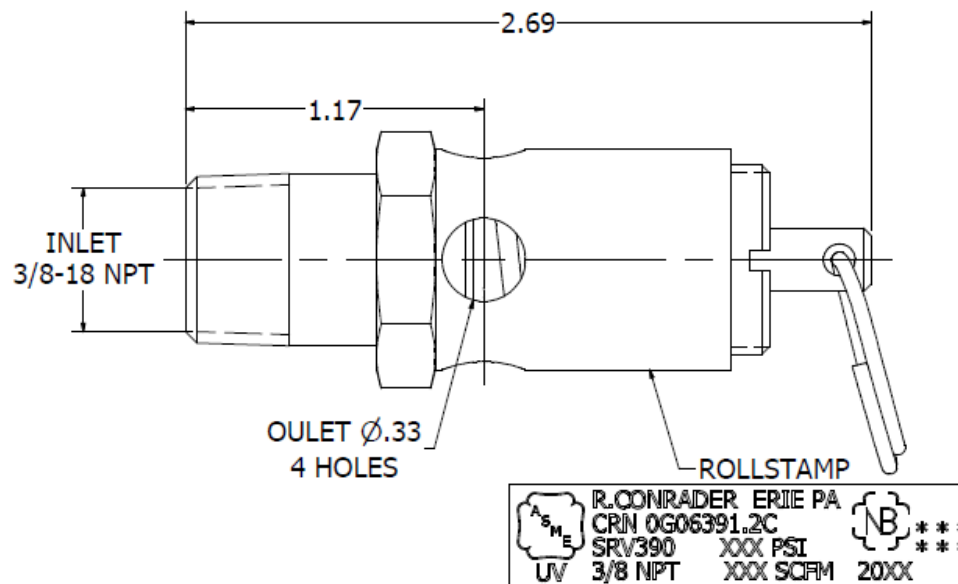
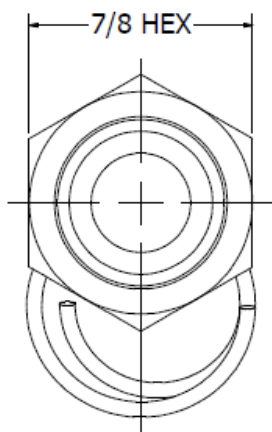
Options

1. Connection Size: The available sizes are 3/8" or 1/2".
2. Connection Type
 - a. NPT – Pipe Threads made to the ASME B1.20.1 Standard
 - b. BSPT – Pipe Threads made to the ISO 7-1 Standard
 - c. BSPP – Pipe Threads made to the ISO 7-1 Standard
3. Construction Material
 - a. Brass
 - b. Nickel Plated – Electroless Nickel Plated Brass
 - c. Stainless Steel
4. Seal Material
 - a. Silicone
 - b. Viton®
5. Optional Code
 - a. None: Will meet the requirements of ASME BPV Code Section XIII.
 - b. CE/UKCA Mark: Valve has the “CE/UKCA” certification for the European PED and UK PESR.
 - c. Non-Code: For valves with a pressure setting below 25 psi.
6. Serialized Valves: Have a unique serial number and include certificate.
7. Thread Sealant
 - a. White colored thread sealant

Examples:

1. A 1/2" NPT brass valve with a silicone seal set 200 psi is **SRV390-1/2-200**.
2. A 3/8" BSPT brass valve with a Viton seal and white thread sealant set at 100 psi is **SRV390-3/8-BSPT-V-SST-100**.

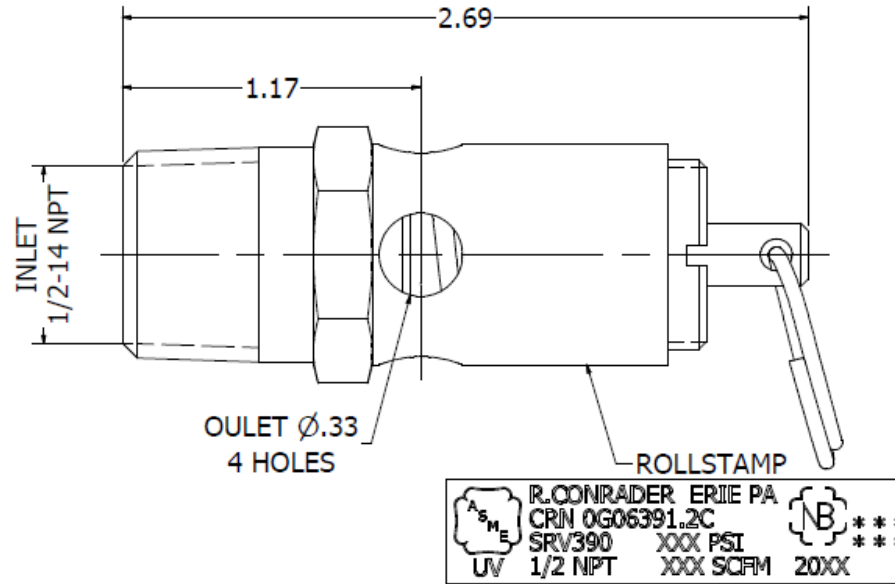
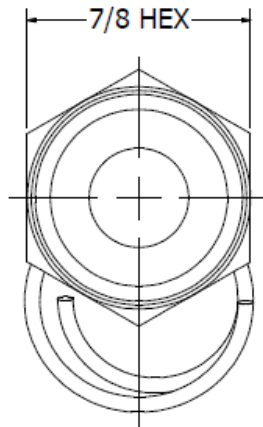
THIRD ANGLE PROJECTION



NOTES:

- * OPERATING TEMPERATURE RANGE: -65°F TO 400°F
- * SET PRESSURE RANGE: 25-300 psig
- * SET PRESSURE TOLERANCE: ±2 psig UP TO AND INCLUDING 70 psig, ±3% OF SET PRESSURE GREATER THAN 70 psig.
- * SEAT TIGHTNESS: BUBBLE TIGHT WITHIN 5 psig FOR SET PRESSURE 50 psig OR LESS. BUBBLE TIGHT WITHIN 10% FOR SET PRESSURE GREATER THAN 50 psig.
- * VALVE WEIGHT: 0.24 lbmass

	R. CONRADER COMPANY 749 EAST 18TH STREET P.O. BOX 924 ERIE, PA 16512-0924 (814) 898-2727	DESCRIPTION DIM. OUTLINE	ISSUED BY JJF	ISSUED 8/9/2007	GROUP SV
	THIS DOCUMENT CONTAINS INFORMATION CONFIDENTIAL TO CONRADER. LOANED SUBJECT TO THE CONDITIONS THAT IT NOT BE USED OR CAUSED TO BE USED IN ANY WAY HARMFUL TO CONRADER AND BE RETURNED ON DEMAND.	VALVE MODEL SRV390-3/8	REVISIED BY NRP	REVISIED 2/15/2016	PAGE 2 OF 4
	MATERIAL	SCALE 3:2	DRAWING NO. 5264		



R. CONRADER ERIE PA
 CRIN 0G06391.2C
 SRV390 XXX PSI
 UV 1/2 NPT XXX SCFM 20XX

NOTES:

- * OPERATING TEMPERATURE RANGE: -65°F TO 400°F
- * SET PRESSURE RANGE: 25-300 psig
- * SET PRESSURE TOLERANCE: ±2 psig UP TO AND INCLUDING 70 psig, ±3% OF SET PRESSURE GREATER THAN 70 psig.
- * SEAT TIGHTNESS: BUBBLE TIGHT WITHIN 5 psig FOR SET PRESSURE 50 psig OR LESS. BUBBLE TIGHT WITHIN 10% FOR SET PRESSURE GREATER THAN 50 psig.
- * VALVE WEIGHT: 0.28 lbmass

R. CONRADER COMPANY 749 EAST 18TH STREET P.O. BOX 924 ERIE, PA 16512-0924 (814) 898-2727	DESCRIPTION DIM. OUTLINE	ISSUED BY JPC	ISSUED 4/14/2008	GROUP SV
	VALVE MODEL SRV390-1/2	REVISIONS NRP	REVISED 2/15/2016	PAGE 2 OF 4
MATERIAL	SCALE 3:2	DRAWING NO. 5629	REVISION E	

THIS DOCUMENT CONTAINS INFORMATION CONFIDENTIAL TO CONRADER. LOANED SUBJECT TO THE CONDITIONS THAT IT NOT BE USED OR CAUSED TO BE USED IN ANY WAY HARMFUL TO CONRADER AND BE RETURNED ON DEMAND.

SRV390 FLOW CAPACITY

<u>SETTING (PSI)</u>	<u>SCFM</u>
25	66
30	73
37	85
40	90
45	99
50	108
55	116
60	125
65	133
70	142
75	150
80	159
85	167
90	176
95	184
100	193
105	201
110	210
115	218
120	227
125	235
130	244
135	252
140	261
145	270
150	278
155	287
160	295

<u>SETTING (PSI)</u>	<u>SCFM</u>
165	304
170	312
175	321
180	329
185	338
190	346
195	355
200	363
205	372
210	380
215	389
220	397
225	406
230	414
235	423
240	431
245	440
250	449
255	457
260	466
265	474
270	483
275	491
280	500
285	508
290	517
295	525
300	534