



**Pressure Relief Valve  
Model: SRH580**



**Set Pressure Range: 25-300 psig**

**Set Pressure Tolerance:  $\pm 2$  psig up to and including 70 psig,  $\pm 3\%$  of set pressure greater than 70 psig. As required in Table 3.6.3.1-2 of the ASME Boiler & Pressure Vessel Code Sec. XIII.**

**Seat Leakage: No audible leak at 45% set pressure at 25-74 psig.  
No audible leak at 90% set pressure above 74 psig.  
As required by Conrader Standards, allowed by paragraph 3.6.4 [a] of the ASME Boiler & Pressure Vessel Code Sec. XIII.**

**Flow Factor (Slope Method): 3.33**

**Operating Temperature Range: -65°F to 400°F**

**Materials of Construction:**

**Seat, Cap, Piston: ASTM B16 Brass or ASTM A582 Stainless**

**Spring: 302 Stainless Steel**

**Sealing Ball: 440 Stainless Steel**

**Valve Weight: 0.717 lbm**

**Valve Options:**

**Valve Material: ASTM B16 Brass or ASTM A582 Stainless**

**Compliance with European PED 2014/68/EU, "CE" Stamp**

**Plating: Nickel Plating**

**Inlet NPT Sizes: 3/4 NPT or BSPT**

**1 NPT or BSPT**

**Certifications:**

**ASME Boiler & Pressure Vessel Code Section XIII**

**CSA B51-03 Boiler, Pressure, Vessel, and Pressure Piping Code**



# CONRADER

## Ordering Information

<b>SRH580</b>		-	<b>3/4</b>		-	<b>BSPT</b>		-	<b>SS</b>		-	<b>CE</b>		-	<b>SC</b>		-	<b>SST</b>		-	<b>150</b>	
Connection Size		Connection Type		Construction Material		Optional Code		Serialized		Thread Sealant		Pressure Setting										
Option	Code	Option	Code	Option	Code	Option	Code	Option	Code	Option	Code											
3/4"	3/4	NPT	(Blank)	Brass	(Blank)	None	(Blank)	None	(Blank)	None	(Blank)											
1"	1	BSPT	BSPT	Nickel Plated	NP	CE Mark	CE	Serialized	SC	White	SST											
				Stainless Steel	SS	Non-Code	NC															

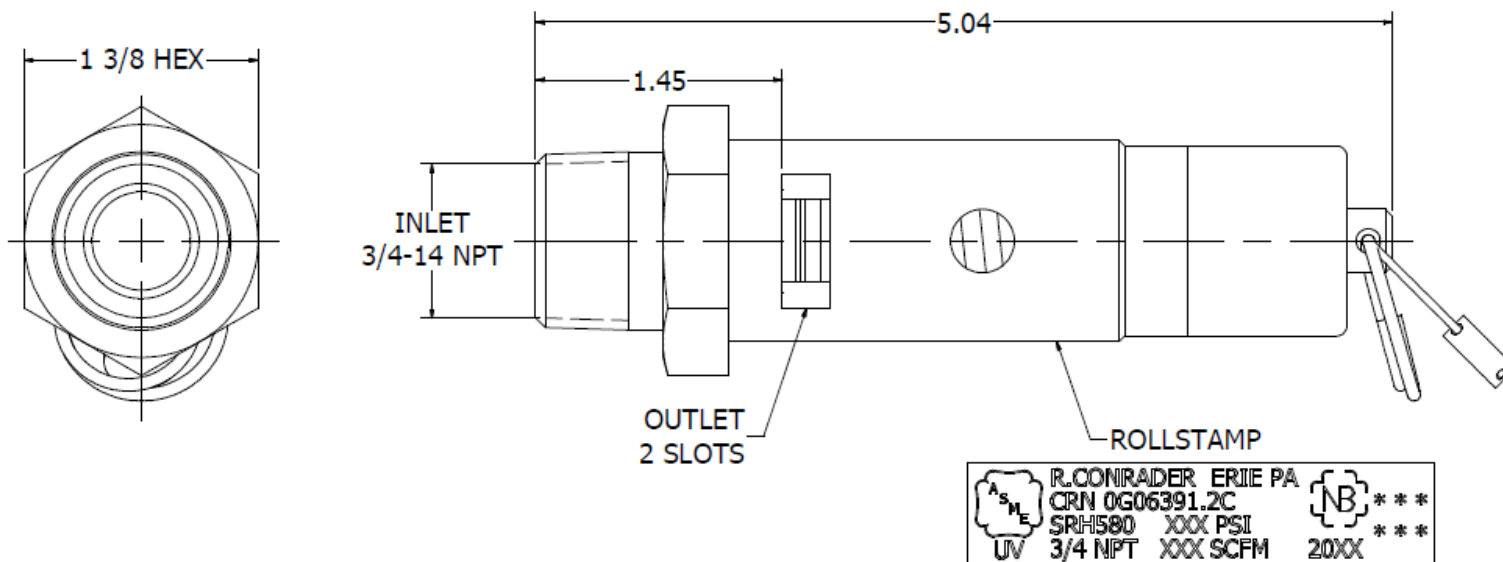
## Options

1. Connection Size: The available sizes are 3/4" or 1".
2. Connection Type
  - a. NPT – Pipe Threads made to the ASME B1.20.1 Standard
  - b. BSPT – Pipe Threads made to the ISO 7-1 Standard
3. Construction Material
  - a. Brass
  - b. Nickel Plated – Electroless Nickel Plated Brass
  - c. Stainless Steel
4. Optional Code
  - a. None: Will meet the requirements of ASME BPV Code Section XIII.
  - b. CE/UKCA Mark: Valve has the “CE/UKCA” certification for the European PED and UK PESR.
  - c. Non-Code: For valves with a pressure setting below 25 psi.
5. Serialized Valves: Have a unique serial number and include certificate.
6. Thread Sealant
  - a. White colored thread sealant
  - b. Rust colored thread sealant

Examples:

1. A 1" NPT brass valve set 200 psi is **SRH580-1-200**.
2. A 3/4" BSPT brass valve with white thread sealant set at 100 psi is **SRH580-3/4-BSPT-SST-100**.

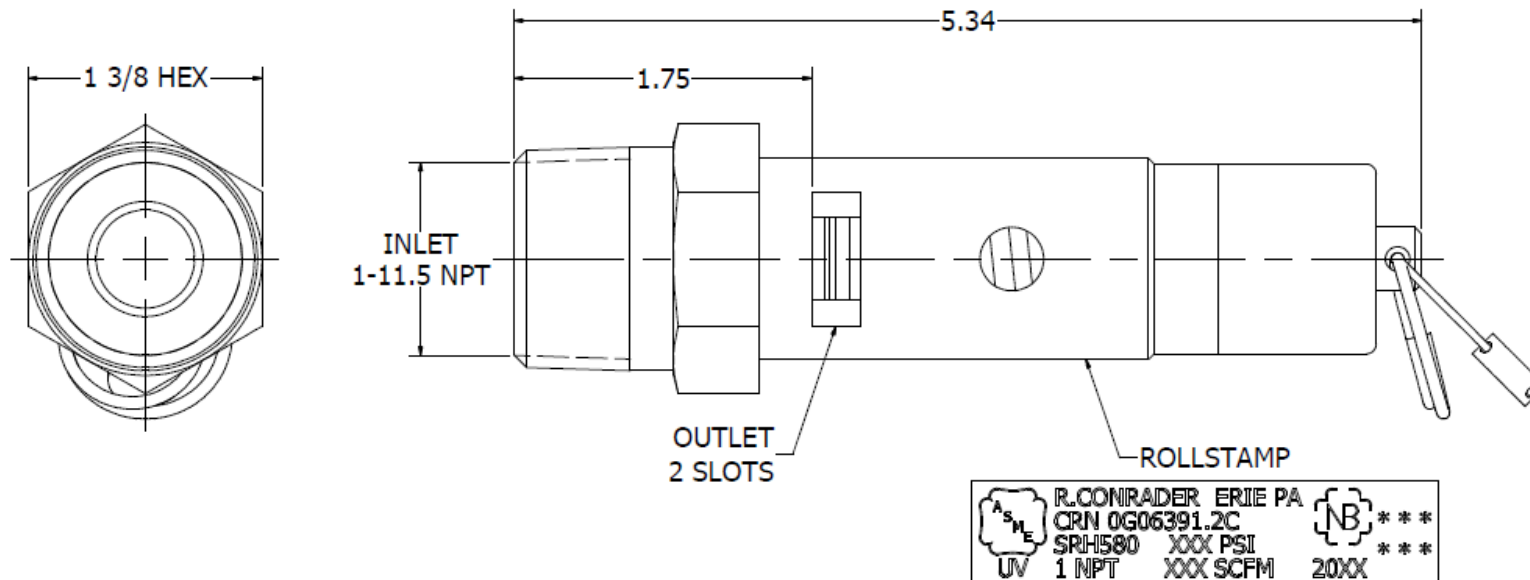
THIRD ANGLE PROJECTION



**NOTES:**

- \* OPERATING TEMPERATURE RANGE: -65°F TO 400°F
- \* SET PRESSURE RANGE: 25-300 psig
- \* SET PRESSURE TOLERANCE: ±2 psig UP TO AND INCLUDING 70 psig, ±3% OF SET PRESSURE GREATER THAN 70 psig.
- \* SEAT TIGHTNESS: NO AUDIBLE LEAK AT 45% OF SET PRESSURE FOR SET PRESSURE 25-74 psig. NO AUDIBLE LEAK AT 90% OF SET PRESSURE FOR SET PRESSURE GREATER THAN 74 psig.
- \* VALVE WEIGHT: 1.15 lbmass

	R. CONRADER COMPANY 749 EAST 18TH STREET P.O. BOX 924 ERIE, PA 16512-0924 (814) 898-2727	<b>DESCRIPTION</b> <b>DIM. OUTLINE</b>	<b>ISSUED BY</b> <b>L.CONTI</b>	<b>ISSUED</b> <b>1/17/1995</b>	<b>GROUP</b> <b>SV</b>
	THIS DOCUMENT CONTAINS INFORMATION CONFIDENTIAL TO CONRADER. LOANED SUBJECT TO THE CONDITIONS THAT IT NOT BE USED OR CAUSED TO BE USED IN ANY WAY HARMFUL TO CONRADER AND BE RETURNED ON DEMAND.	<b>VALVE MODEL</b> <b>SRH580-3/4</b>	<b>REVISOR</b> <b>NRP</b>	<b>REVISED</b> <b>4/20/2016</b>	<b>PAGE 2 OF 4</b>
	<b>MATERIAL</b>	<b>SCALE</b> <b>1:1</b>	<b>DRAWING NO.</b> <b>0937</b>	<b>REVISION</b> <b>K</b>	



R.CONRADER ERIE PA  
 CRN 0G06391.2C  
 SRH580 XXX PSI  
 1 NPT XXX SCFM 20XX

**NOTES:**

- \* OPERATING TEMPERATURE RANGE: -65°F TO 400°F
- \* SET PRESSURE RANGE: 25-300 psig
- \* SET PRESSURE TOLERANCE: ±2 psig UP TO AND INCLUDING 70 psig, ±3% OF SET PRESSURE GREATER THAN 70 psig.
- \* SEAT TIGHTNESS: NO AUDIBLE LEAK AT 45% OF SET PRESSURE FOR SET PRESSURE 25-74 psig. NO AUDIBLE LEAK AT 90% OF SET PRESSURE FOR SET PRESSURE GREATER THAN 74 psig.
- \* VALVE WEIGHT: 1.37 lbmass

R. CONRADER COMPANY 749 EAST 18TH STREET P.O. BOX 924 ERIE, PA 16512-0924 (814) 898-2727	DESCRIPTION <b>DIM. OUTLINE</b>	ISSUED BY <b>L.CONTI</b>	ISSUED <b>1/13/1995</b>	GROUP <b>SV</b>
	VALVE MODEL <b>SRH580-1</b>	REVISIONS <b>NRP</b>	REVISED <b>4/20/2016</b>	PAGE 2 OF 4
THIS DOCUMENT CONTAINS INFORMATION CONFIDENTIAL TO CONRADER. LOANED SUBJECT TO THE CONDITIONS THAT IT NOT BE USED OR CAUSED TO BE USED IN ANY WAY HARMFUL TO CONRADER AND BE RETURNED ON DEMAND.	MATERIAL	SCALE <b>1:1</b>	DRAWING NO. <b>0933</b>	REVISION <b>K</b>

**SRH580 FLOW CAPACITY**

<b><u>SETTING (PSI)</u></b>	<b><u>SCFM</u></b>
25	142
30	158
35	177
40	195
45	213
50	232
55	250
60	268
65	287
70	305
75	323
80	341
85	360
90	378
95	396
100	415
105	433
110	451
115	470
120	488
125	506
130	525
135	543
140	561
145	580
150	598
155	616
160	635

<b><u>SETTING (PSI)</u></b>	<b><u>SCFM</u></b>
165	653
170	671
175	689
180	708
185	726
190	744
195	763
200	781
205	799
210	818
215	836
220	854
225	873
230	891
235	909
240	928
245	946
250	964
255	983
260	1001
265	1019
270	1037
275	1056
280	1074
285	1092
290	1111
295	1129
300	1147