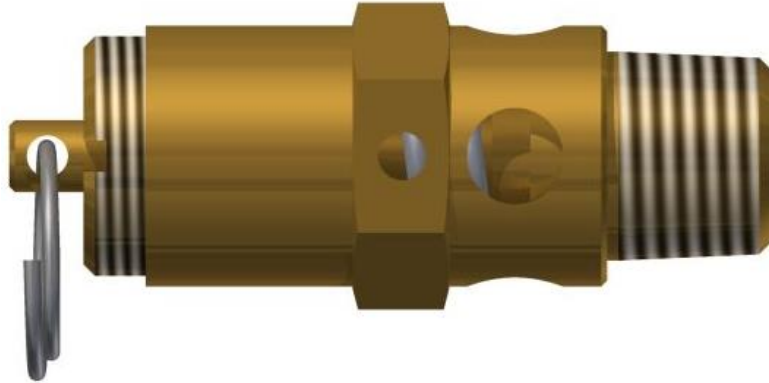




**Pressure Relief Valve  
Model: SRH250**



**Set Pressure Range: 25-350 psig**

**Set Pressure Tolerance:  $\pm 2$  psig up to and including 70 psig,  $\pm 3\%$  of set pressure greater than 70 psig. As required in paragraph UG-134(d)(1) of the ASME Boiler & Pressure Vessel Code Sec. XIII.**

**Seat Leakage: No audible leak at 45% set pressure at 25-74 psig.  
No audible leak at 90% set pressure above 74 psig.  
As required by Conrader Standards, allowed by paragraph UG-136(d)(5) of the ASME Boiler & Pressure Vessel Code Sec. XIII.**

**Flow Factor (Slope Method): 0.72**

**Operating Temperature Range: -65°F to 400°F**

**Materials of Construction:**

**Seat, Cap, Piston: ASTM B16 Brass or ASTM A582 Stainless**

**Spring: 302 Stainless Steel**

**Sealing Ball: 440 Stainless Steel**

**Valve Weight: 0.123 lbm**

**Valve Options:**

**Valve Material: ASTM B16 Brass or ASTM A582 Stainless**

**Compliance with European PED 2014/68/EU, "CE" Stamp**

**Compliance with UK PESR SI 2016 no. 1105 as amended, "UK CA" Stamp**

**Plating: Nickel Plating**

**Inlet NPT Sizes: 1/8 NPT or BSPT**

**1/4 NPT or BSPT**

**3/8 NPT or BSPT**

**Certifications:**

**ASME Boiler & Pressure Vessel Code Section XIII**

**CSA B51-03 Boiler, Pressure, Vessel, and Pressure Piping Code**



# CONRADER

## Ordering Information

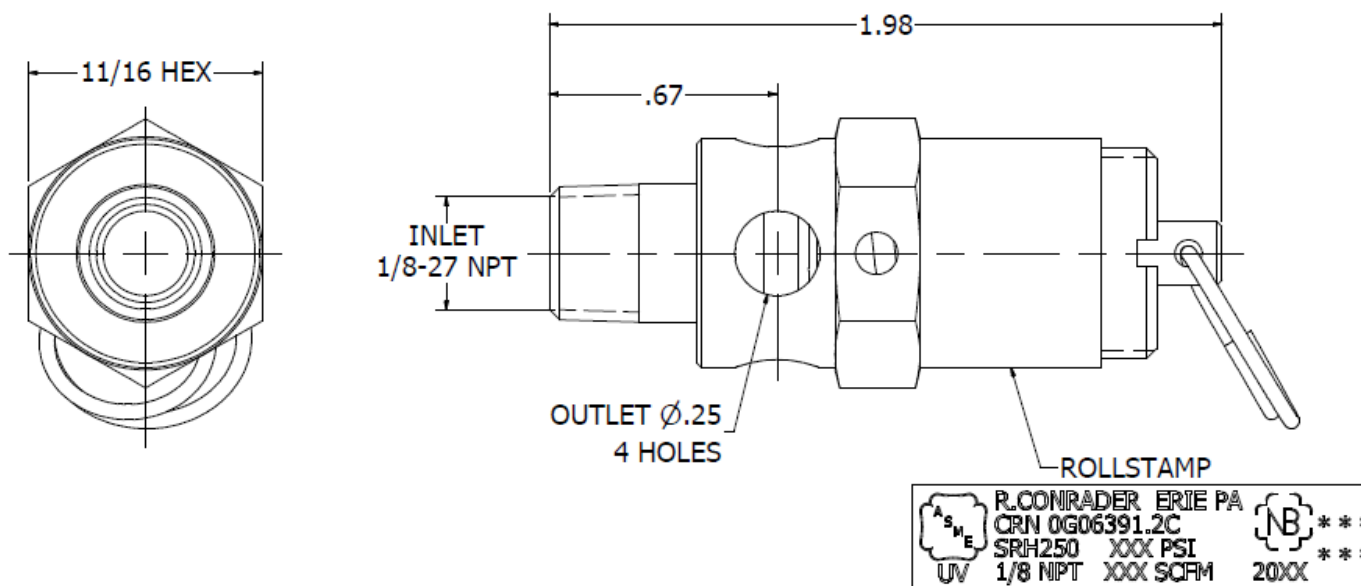
<b>SRH250</b>		-	<b>1/4</b>		-	<b>BSPT</b>		-	<b>SS</b>		-	<b>CE</b>		-	<b>SC</b>		-	<b>SST</b>		-	<b>150</b>	
Connection Size		Connection Type		Construction Material		Optional Code		Serialized		Thread Sealant		Pressure Setting										
Option	Code	Option	Code	Option	Code	Option	Code	Option	Code	Option	Code											
1/8"	1/8	NPT	(Blank)	Brass	(Blank)	None	(Blank)	None	(Blank)	None	(Blank)											
1/4"	1/4	BSPT	BSPT	Nickel Plated	NP	CE Mark	CE	Serialized	SC	White	SST											
3/8"	3/8"			Stainless Steel	SS	Non-Code	NC															

## Options

1. Connection Size: The available sizes are 1/8", 1/4", or 3/8".
2. Connection Type
  - a. NPT – Pipe Threads made to the ASME B1.20.1 Standard
  - b. BSPT – Pipe Threads made to the ISO 7-1 Standard
3. Construction Material
  - a. Brass
  - b. Nickel Plated – Electroless Nickel Plated Brass
  - c. Stainless Steel
4. Optional Code
  - a. None: Will meet the requirements of ASME BPV Code Section XIII.
  - b. CE Mark: Valve has the “CE” mark for the European Union Pressure Equipment Directive.
  - c. Non-Code: For valves with a pressure setting below 25 psi.
5. Serialized Valves: Have a unique serial number and include certificate.
6. Thread Sealant
  - a. White colored thread sealant
  - b. Rust colored thread sealant

### Examples:

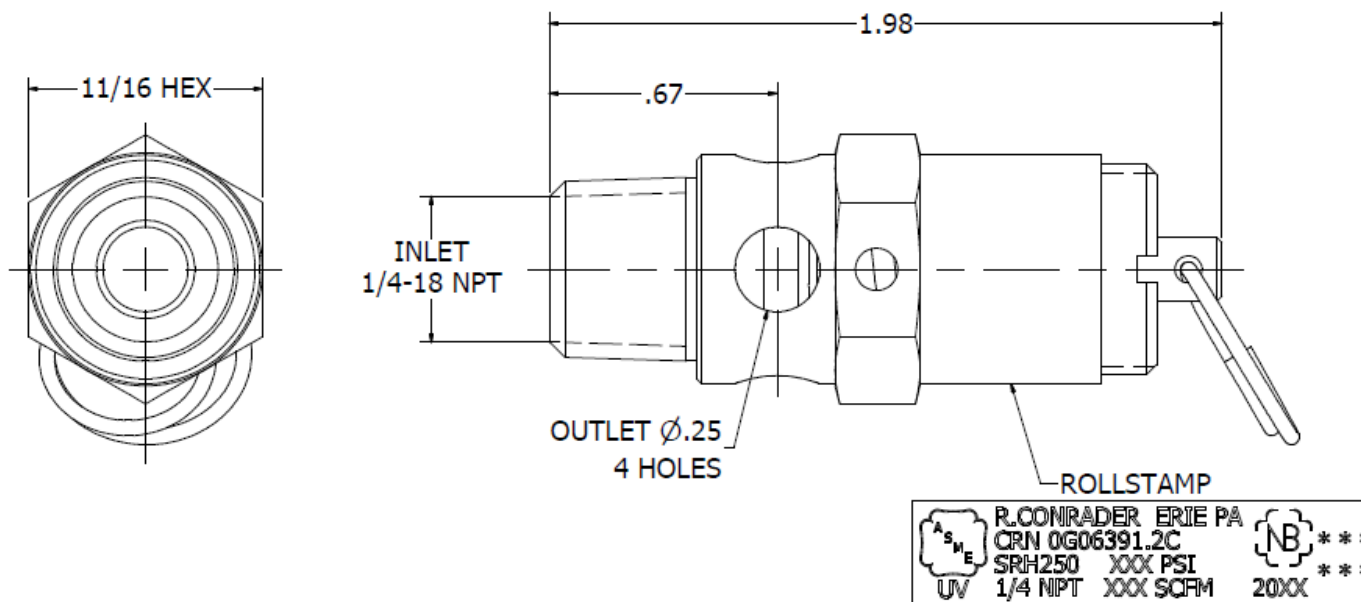
1. A 1/4" NPT brass valve set 200 psi is **SRH250-1/4-200**.
2. A 1/8" BSPT brass valve with white thread sealant set at 100 psi is **SRH250-1/8-BSPT-SST-100**.



**NOTES:**

- \* OPERATING TEMPERATURE RANGE: -65°F TO 400°F
- \* SET PRESSURE RANGE: 25-350 psig
- \* SET PRESSURE TOLERANCE: ±2 psig UP TO AND INCLUDING 70 psig, ±3% OF SET PRESSURE GREATER THAN 70 psig.
- \* SEAT TIGHTNESS: NO AUDIBLE LEAK AT 45% OF SET PRESSURE FOR SET PRESSURE 25-74 psig. NO AUDIBLE LEAK AT 90% OF SET PRESSURE FOR SET PRESSURE GREATER THAN 74 psig.
- \* VALVE WEIGHT: 0.10 lbmass

	R. CONRADER COMPANY 749 EAST 18TH STREET P.O. BOX 924 ERIE, PA 16512-0924 (814) 898-2727	<b>DESCRIPTION</b> <b>DIM. OUTLINE</b>	<b>ISSUED BY</b> <b>IGNATAN</b>	<b>ISSUED</b> <b>10/10/2006</b>	<b>GROUP</b> <b>SV</b>
	THIS DOCUMENT CONTAINS INFORMATION CONFIDENTIAL TO CONRADER. LOANED SUBJECT TO THE CONDITIONS THAT IT NOT BE USED OR CAUSED TO BE USED IN ANY WAY HARMFUL TO CONRADER AND BE RETURNED ON DEMAND.	<b>VALVE MODEL</b> <b>SRH250-1/8</b>	<b>REVISOR</b> <b>NRP</b>	<b>REVISED</b> <b>4/14/2016</b>	<b>PAGE 2 OF 4</b>
	<b>MATERIAL</b>	<b>SCALE</b> <b>2:1</b>	<b>DRAWING NO.</b> <b>5192</b>	<b>REVISION</b> <b>F</b>	

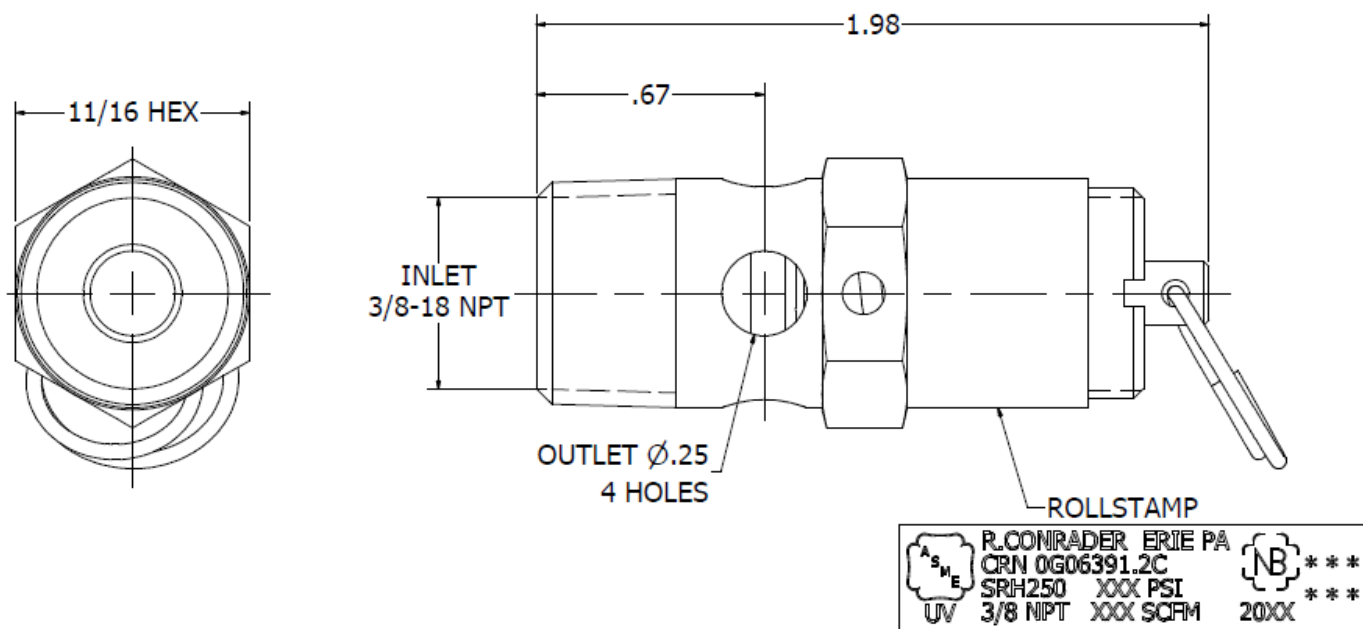
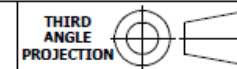


	R. CONRADER ERIE PA		***
	CRN 0G06391.2C		***
	SRH250 XXX PSI		***
	UV 1/4 NIPT XXX SCFM		20XX

**NOTES:**

- \* OPERATING TEMPERATURE RANGE: -65°F TO 400°F
- \* SET PRESSURE RANGE: 25-350 psig
- \* SET PRESSURE TOLERANCE: ±2 psig UP TO AND INCLUDING 70 psig, ±3% OF SET PRESSURE GREATER THAN 70 psig.
- \* SEAT TIGHTNESS: NO AUDIBLE LEAK AT 45% OF SET PRESSURE FOR SET PRESSURE 25-74 psig. NO AUDIBLE LEAK AT 90% OF SET PRESSURE FOR SET PRESSURE GREATER THAN 74 psig.
- \* VALVE WEIGHT: 0.11 lbmass

	R. CONRADER COMPANY 749 EAST 18TH STREET P.O. BOX 924 ERIE, PA 16512-0924 (814) 898-2727	DESCRIPTION <b>DIM. OUTLINE</b>	ISSUED BY <b>L. CONTI</b>	ISSUED <b>1/19/1995</b>	GROUP <b>SV</b>	
	THIS DOCUMENT CONTAINS INFORMATION CONFIDENTIAL TO CONRADER. LOANED SUBJECT TO THE CONDITIONS THAT IT NOT BE USED OR CAUSED TO BE USED IN ANY WAY HARMFUL TO CONRADER AND BE RETURNED ON DEMAND.	VALVE MODEL <b>SRH250-1/4</b>	REVISOR BY <b>NRP</b>	REVISED <b>4/14/2016</b>	PAGE 2 OF 4	
	MATERIAL	SCALE <b>2:1</b>	DRAWING NO. <b>0943</b>	REVISION <b>J</b>		



ASME UV	R. CONRADER ERIE PA	NB *** *** 20XX
	CRN 0G06391.2C	
	SRH250 XXX PSI	
	3/8 NIPT XXX SCFM	

**NOTES:**

- \* OPERATING TEMPERATURE RANGE: -65°F TO 400°F
- \* SET PRESSURE RANGE: 25-350 psig
- \* SET PRESSURE TOLERANCE: ±2 psig UP TO AND INCLUDING 70 psig, ±3% OF SET PRESSURE GREATER THAN 70 psig.
- \* SEAT TIGHTNESS: NO AUDIBLE LEAK AT 45% OF SET PRESSURE FOR SET PRESSURE 25-74 psig. NO AUDIBLE LEAK AT 90% OF SET PRESSURE FOR SET PRESSURE GREATER THAN 74 psig.
- \* VALVE WEIGHT: 0.13 lbmass

	R. CONRADER COMPANY 749 EAST 18TH STREET P.O. BOX 924 ERIE, PA 16512-0924 (814) 898-2727	<b>DESCRIPTION</b> <b>DIM. OUTLINE</b>	<b>ISSUED BY</b> <b>L. CONTI</b>	<b>ISSUED</b> <b>6/16/2008</b>	<b>GROUP</b> <b>SV</b>
	THIS DOCUMENT CONTAINS INFORMATION CONFIDENTIAL TO CONRADER. LOANED SUBJECT TO THE CONDITIONS THAT IT NOT BE USED OR CAUSED TO BE USED IN ANY WAY HARMFUL TO CONRADER AND BE RETURNED ON DEMAND.	<b>VALVE MODEL</b> <b>SRH250-3/8</b>	<b>REVISOR</b> <b>NRP</b>	<b>REVISOR</b> <b>4/14/2016</b>	<b>REVISION</b> <b>5696</b>



**SRH250 FLOW CAPACITY**

<b><u>SETTING (PSI)</u></b>	<b><u>SCFM</u></b>
25	30
30	34
35	38
40	42
45	46
50	50
55	54
60	58
65	62
70	66
75	69
80	73
85	77
90	81
95	85
100	89
105	93
110	97
115	101
120	105
125	109
130	113
135	117
140	121
145	125
150	129
155	133
160	137
165	141
170	145
175	149
180	153
185	157

<b><u>SETTING (PSI)</u></b>	<b><u>SCFM</u></b>
190	161
195	165
200	168
205	172
210	176
215	180
220	184
225	188
230	192
235	196
240	200
245	204
250	208
255	212
260	216
265	220
270	224
275	228
280	232
285	236
290	240
295	244
300	248
305	252
310	256
315	260
320	264
325	267
330	271
335	275
340	279
345	283
350	287